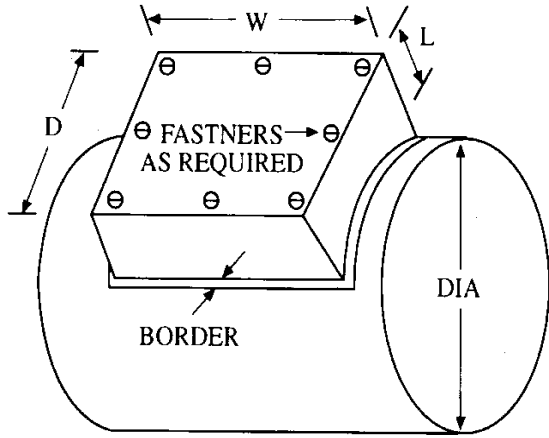




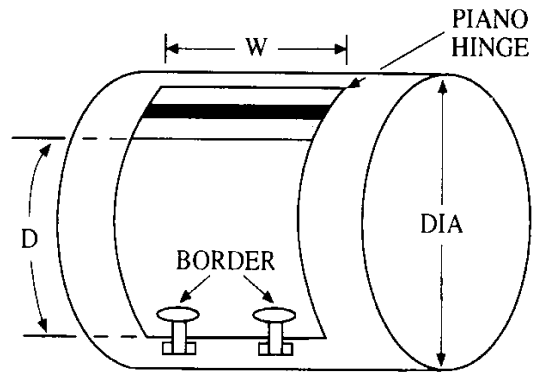
Accessories

Access Doors
Damper Sleeves
Counter Flashing
Table Frames
Guards
Ductwork Supports

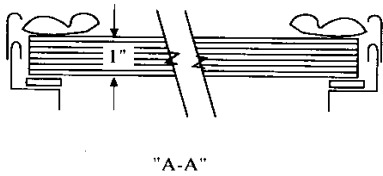
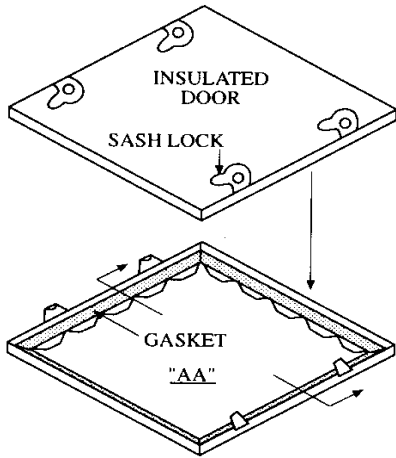
9865 WAYNE AVENUE • CINCINNATI, OHIO 45215
PHONE (513) 733-5955 FAX (513) 733-8050



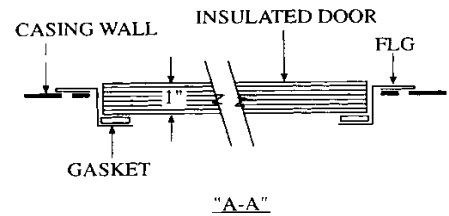
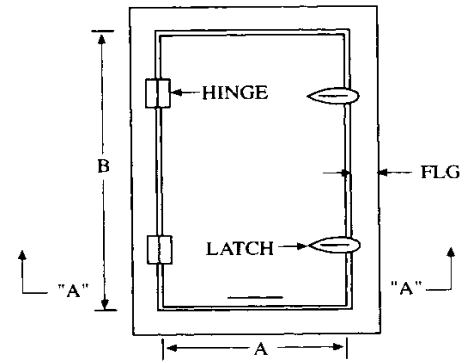
RAISED ACCESS DOOR



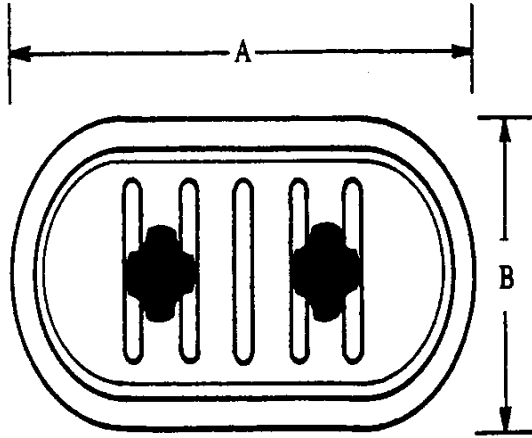
FLAT ACCESS DOOR



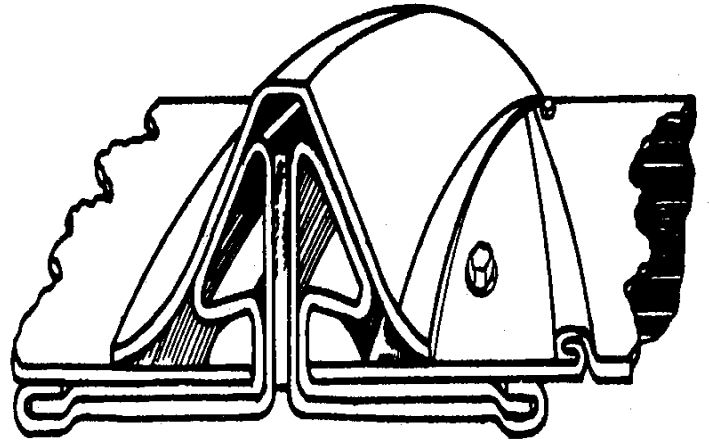
DUCT ACCESS



CASING ACCESS

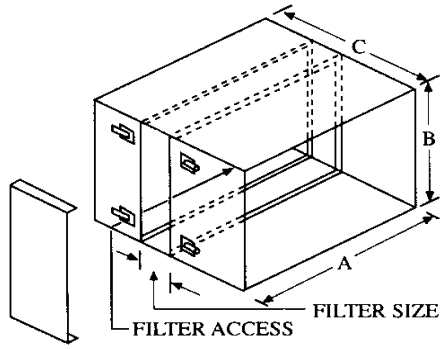


CLAMPING TYPE ACCESS
Doors for Spiral Pipe

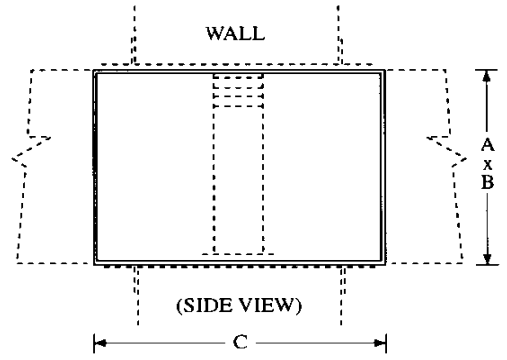


PROPRIETARY ROUND DUCT
Connectors with Clamp Rings

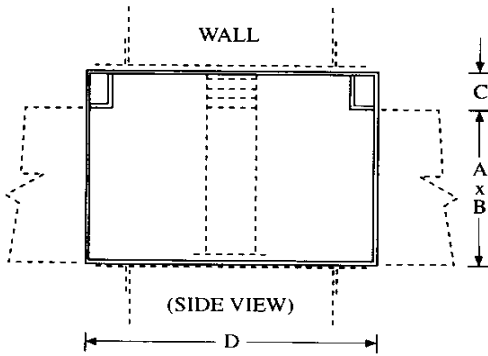
●Specify Manufacturer (SPIRALMATE)



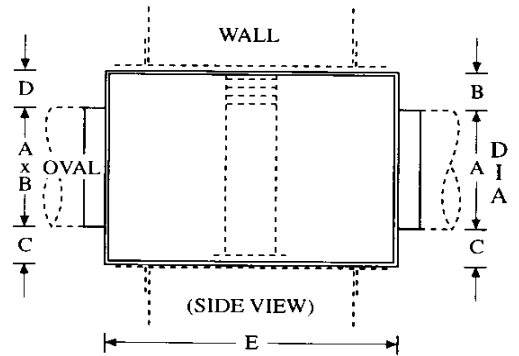
FILTER BOX



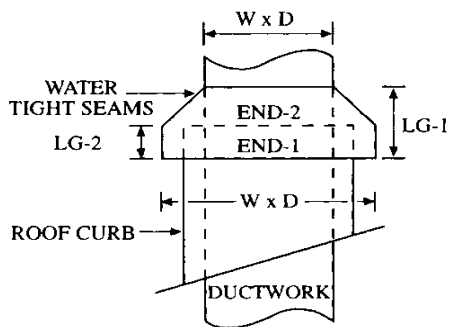
**FIRE DAMPER SLEEVE
(IN AIRSTREAM)**



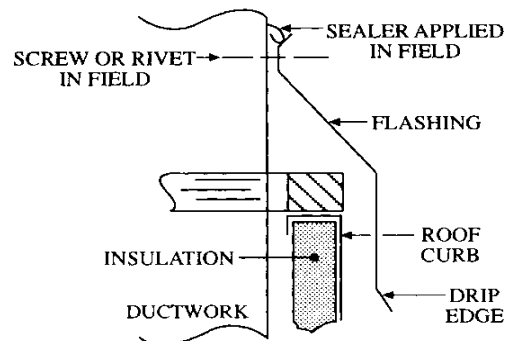
**FIRE DAMPER SLEEVE
(OUT OF AIRSTREAM)**



**FIRE DAMPER SLEEVE
ROUND OR OVAL DUCT**



COUNTER FLASHING



**COUNTER FLASHING
(SECTIONAL VIEW)**

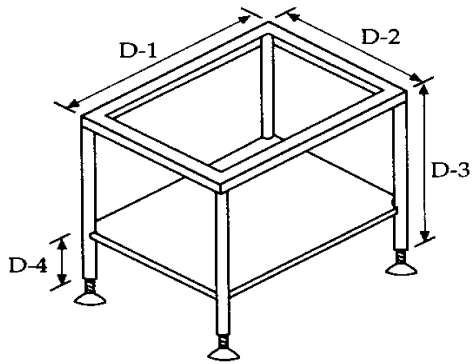


TABLE WITH BOTTOM TRAY

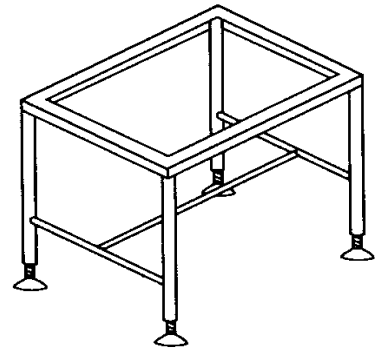
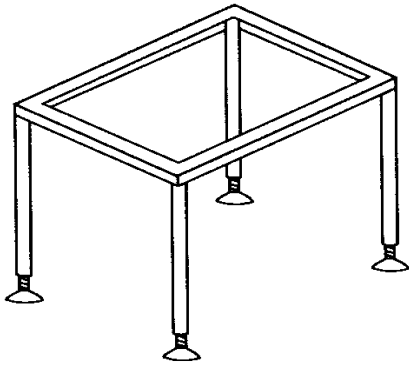
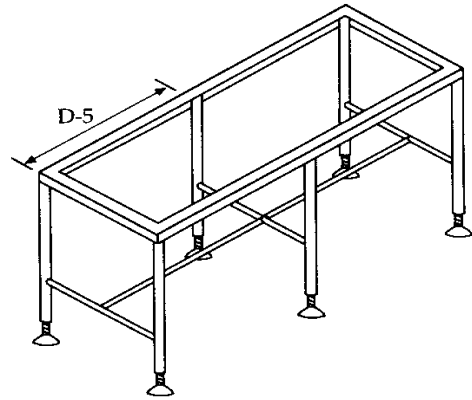


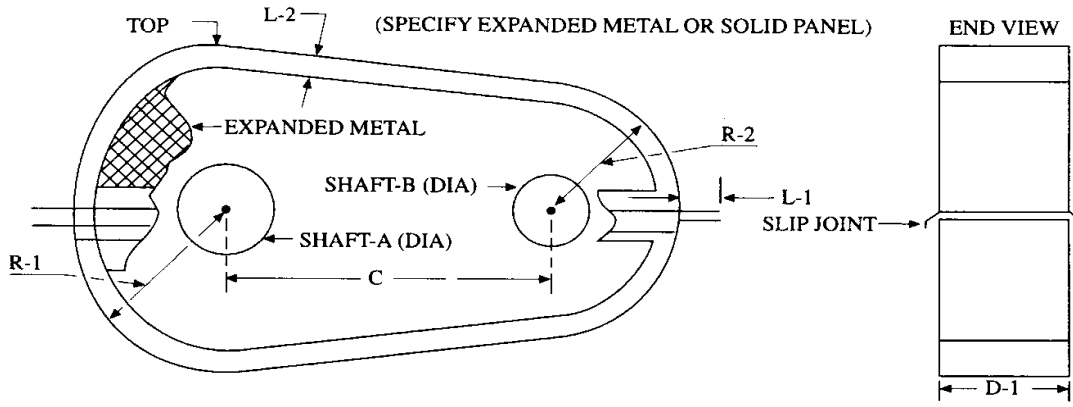
TABLE WITH LEG BRACING



STRAIGHT LEG TABLE

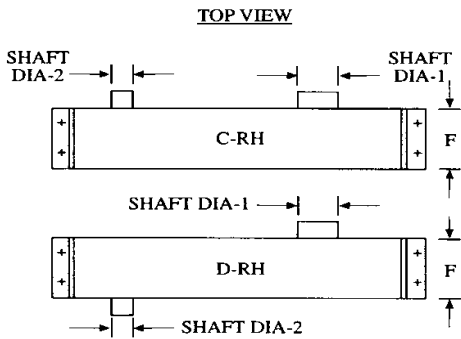
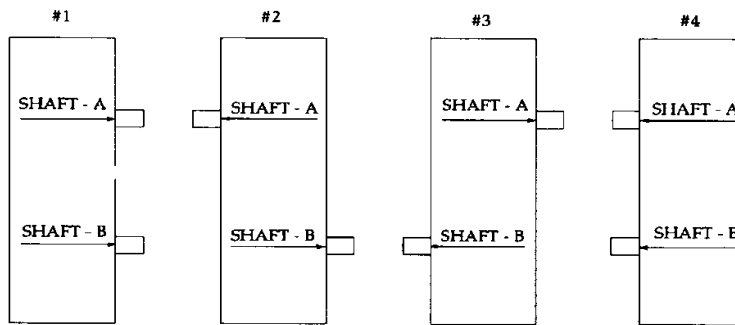


LONG LENGTH TABLE

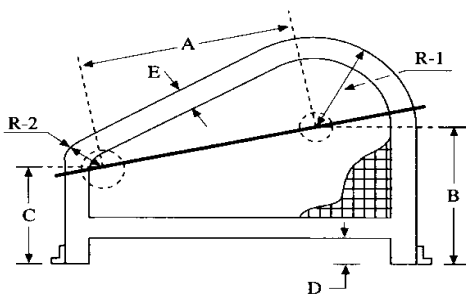


ENCLOSED BELT GUARD

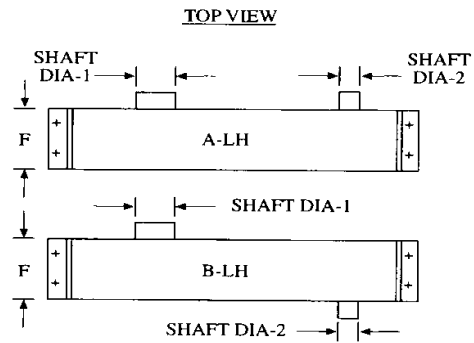
SHAFT ARRANGEMENT TOP VIEW SHOWN



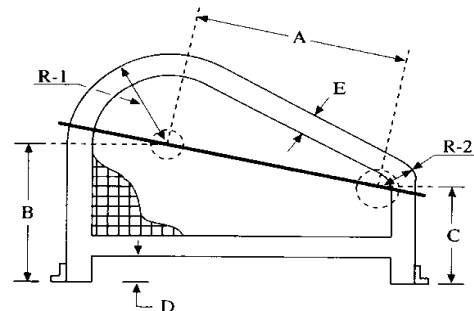
FRONT VIEW 1
REMOVEABLE TOP SECTION



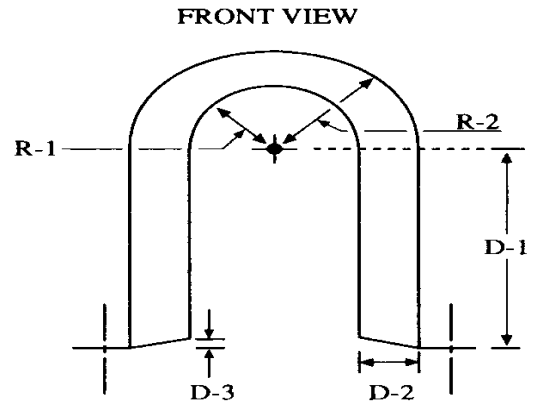
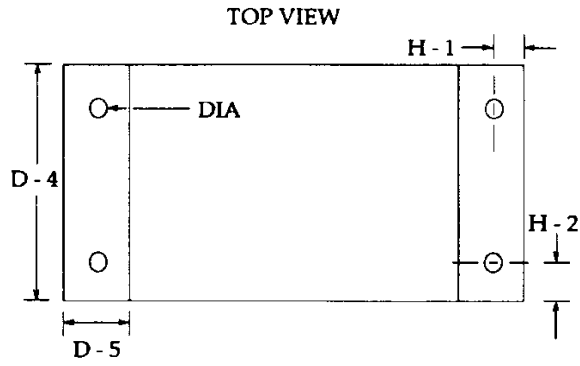
FREE STANDING GUARD



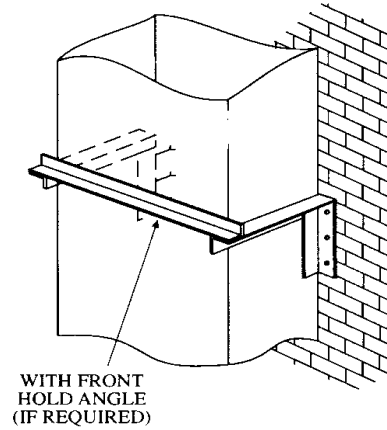
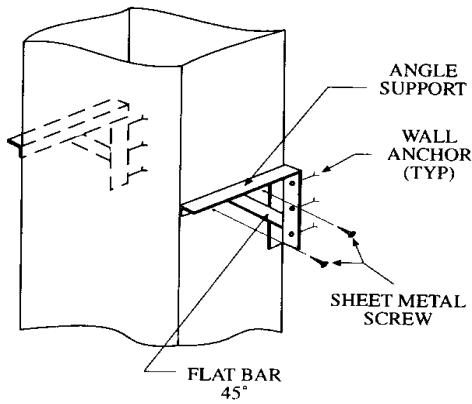
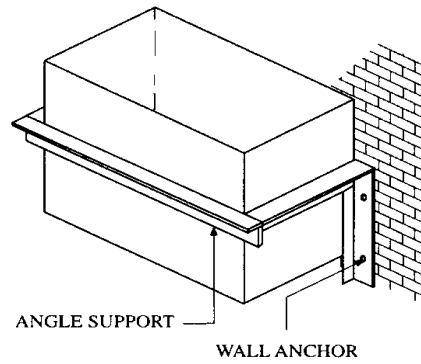
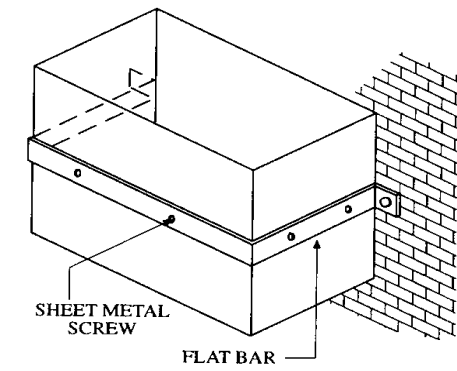
FRONT VIEW 1
REMOVEABLE TOP SECTION



FREE STANDING GUARD

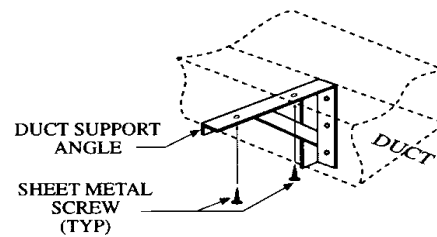
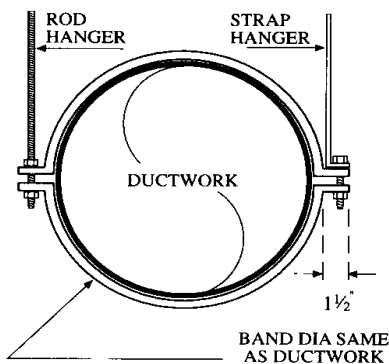
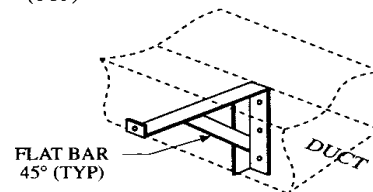
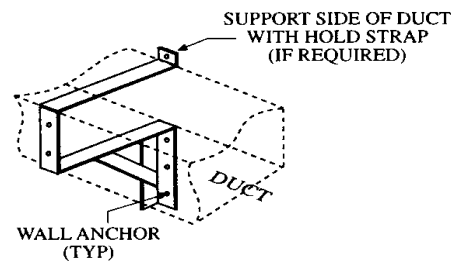
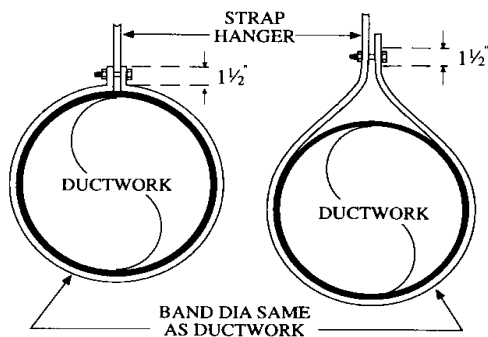


COUPLING GUARD



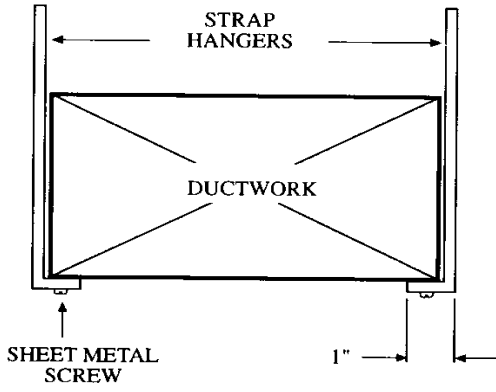
RISER DUCTWORK SUPPORT

RISER DUCTWORK SUPPORT

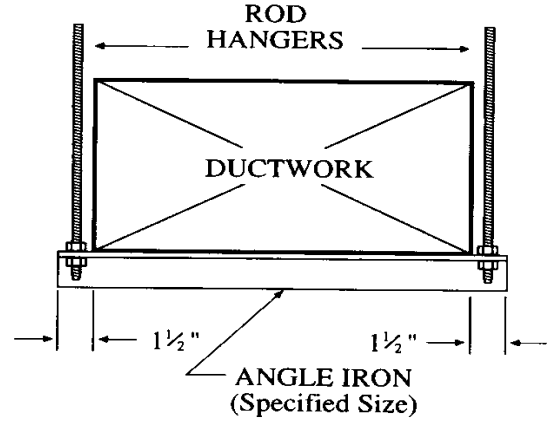


**DUCTWORK SUPPORT
SPECIFIED BAND GAUGE AND WIDTH**

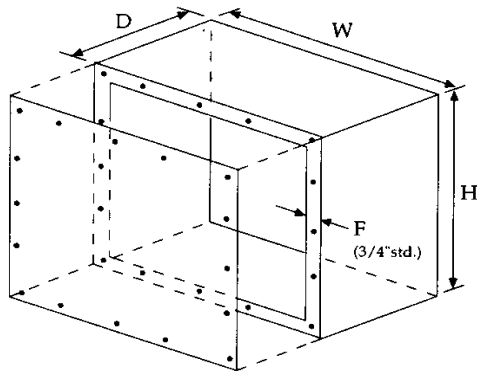
HORIZONTAL DUCTWORK SUPPORT



**DUCTWORK SUPPORT
SPECIFIED BAND GAUGE AND WIDTH**



**DUCTWORK SUPPORT
SPECIFIED ANGLE AND ROD**



MATERIAL:

ALUMINUM (AMS 4008 TYPE 3003-14) **CARBON STEEL** (ASTM A-569) **GALVANIZE** (SATM A-526-527 G90)

PAINT GRIP (SATM A-526-527 G90) **STAINLESS STEEL** (ASTM A-240 TYPE 304)

GAUGE: 1/4" PLATE 12 GA. (.1046) 18 GA. (.0478)
 3/16" PLATE 14 GA. (.0747) 20 GA. (.0359)
 10 GA. (.1345) 16 GA. (.0598)

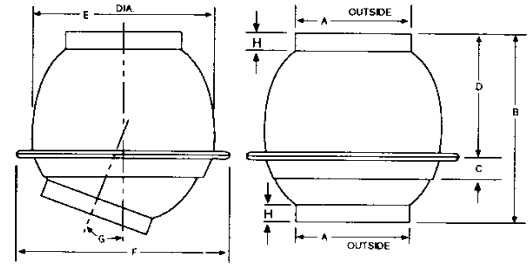
SCREWS: 1/4 - 20 x 1/2" SLOTTED HEX WASHER HEAD, SELFTAPPING, 12" ON CENTER OR AS REQUIRED.

GASKET: NEOPRENE, CLOSED CELL, OIL RESISTENT.

SEAM: CONTINUOUSLY WELDED, AND PRIME PAINTED.

LANGDON, INC. CAN PROVIDE CUTOUTS, HOLES, MOUNTING ANGLES, SPECIAL FINISHES, MATERIALS AND OTHER MODIFICATIONS AS REQUIRED.

ELECTRICAL BOX



SIZE	A	B	C	D	E	F	G	H	WGT.
2"	2	5 3/8	7/8	2 3/8	5	5 1/2	37°	1/2	3/4
3"	3	4 3/4	7/8	2 1/2	4 3/4	5 3/8	23°	9/16	1 1/2
4"	4	6 1/2	1 1/2	3	6 7/8	7 1/2	23°	5/8	1 3/4
5"	5	7 7/8	1 1/2	3 1/2	8 1/4	9	27°	5/8	2 1/4
6"	6	8 7/8	1 5/8	4	9 1/2	10 3/8	27°	3/4	3 1/4
7"	7	7 7/8	1 5/8	3 1/2	9 1/2	10 3/8	15°	3/4	3
8"	8	11	2 1/4	5	12 1/4	13	27°	7/8	5 1/2
9"	9	12	2 3/4	5 1/4	14	14 5/8	27°	3/4	7 1/4
10"	10	11 1/4	2 3/4	5	14	14 3/4	22°	3/4	6
11"	11	12 1/4	2 3/4	5 1/2	15 3/4	16 1/2	23°	3/4	9
12"	12	12 1/4	2 3/4	5 1/4	15 3/4	16 1/2	20°	1	9 1/2
14"	14	14 5/8	3	7 5/8	19 1/8	20	22°	1 1/8	17 1/4

BALL JOINTS